

# DUCTMATE PRODUCTS



ECCO™ is proud to be a member of:



**SMACNA**  
Sheet Metal and Air  
Conditioning Contractors'  
National Association  
[www.smacna.org](http://www.smacna.org)



**HRAI**  
Heating, Refrigeration and  
Air Conditioning  
Institute of Canada  
[www.hrai.ca](http://www.hrai.ca)



**HARDI**  
Heating, Air-conditioning  
& Refrigeration  
Distributors International  
[www.hardinet.org](http://www.hardinet.org)



**ADI**  
Air  
Distribution  
Institute  
[www.steelduct.org](http://www.steelduct.org)



**AD**  
Affiliated Distributors™  
[www.adhq.com](http://www.adhq.com)



**CME**  
Canadian  
Manufacturers &  
Exporters  
[www.cme-mec.ca](http://www.cme-mec.ca)



**SPIDA**  
Spiral Duct  
Manufacturers  
Association  
[www.spida.org](http://www.spida.org)



INDEX

ACCESSORIES
SYSTEM '25' AND '35'
SYSTEM '45'
TDC AND TDF CLEATS
TDC AND TDF CORNERS
CLUTCHER SYSTEM
CLUTCHER TOOLS
DUCT SYSTEM ACCESSORIES
ACCESS DOORS - THE "SANDWICH" FOR ROUND AND RECTANGULAR DUCT
QUICK SLEEVE
DUCTMATE RECTANGULAR DUCT CONNECTOR SYSTEMS
SYSTEM '25' - GALVANIZED
SYSTEM '35' - GALVANIZED
SYSTEM '45' - GALVANIZED
ISOLATION HANGER TYPE SI
MOISTURE DRAINS AND CAPS
PROGUARD - PROTECTIVE DUCT COVERING
ROUND DUCT STRAP BRACKET TYPE BA
SPIRALMATE - ROUND DUCT CONNECTOR SYSTEM
TRAPEZE DUCT HANGER, ISOLATION PADS, AND TRAPEZE BEAM CLAMPS
ULTIMATE ACCESS DOORS - BLACK IRON
WIRE ROPE

LEGEND

ABBREVIATIONS: CTN/QTY = Carton Quantity
PCS/BNDL = Pieces per Bundle

## DUCTMATE RECTANGULAR DUCT CONNECTOR SYSTEMS

### SYSTEM '25'® — GALVANIZED

ITEM #	MODEL	DESCRIPTION	CTN/QTY
715210	DM25	DM25 Angle 20 ft length	3,000/bndl
715212	10004	DC25 Corner with Clip (no bolt required)	250

### SYSTEM '35'® — GALVANIZED

ITEM #	MODEL	DESCRIPTION	CTN/QTY
715200	DM35	DM35 Angle 20 ft length	3,000/bndl
715202	10001	DCIII B Corner with Clip (no bolt required)	250

**NOTE:** System 35 is also available in other material.

### SYSTEM '45'® — GALVANIZED

ITEM #	MODEL	DESCRIPTION	CTN/QTY
715214	DM45	DM45 Angle 19 ft length — 18 GA SMACNA Class K	—
715216	10011	DC45 Plated Bolt Corners	100

## ACCESSORIES

### SYSTEM '25'® AND '35'®

ITEM #	MODEL	DESCRIPTION	CTN/QTY
715250	10005	6" Galvanized Cleat	500 pcs
715260	10955	#440 Butyl Gasket Tape (3/16" x 5/8" x 25 ft/roll)	500 ft
715262	10906	Neoprene Gasket Tape (5/16" x 3/4" x 50 ft/roll)	750 ft
715270	12200	Cleater I Tool	1
715272	12202	Cleater II Tool	1
715274	12206	Corner Alignment Tool	1



**CORNER ALIGNMENT TOOL**  
Modified vice grip can facilitate installation of corner clips.

### SYSTEM '45'®

ITEM #	MODEL	DESCRIPTION	CTN/QTY
715218	10012	DM45 Bolt Cleat — Plated — 10 GA	250 pcs
715266	10909	Neoprene Gasket — 5/16" x 1"	800 ft
715264	10954	440 Gasket — 3/16" x 1"	400 ft



**CLEATER**  
Ideal tool to attach cleat to Ductmate 25/35 Flange Joint where space is not a consideration. Use Cleater II in conjunction with 5/8" deep-wall socket, extensions and wrench (not included) to attach cleat to Ductmate 25/35 in hard to reach places.

### TDC AND TDF CLEATS

ITEM #	MODEL	DESCRIPTION	CTN/QTY
715222	T6CGA	TDC Cleat — 6" Galvanized	500 pcs
715231	11908	TDF Cleat — 6" Galvanized	500 pcs
715230	12149	TDC Universal Cleat — 6" Galvanized (Versa Cleat)	250 pcs

### TDC AND TDF CORNERS

ITEM #	MODEL	DESCRIPTION	CTN/QTY
715224	ACGA	TDC Corner — Galvanized	250
715233	CMFGA	TDF Corner — Galvanized Stackable	250
715232	FGA	TDF Corner — Galvanized	250
715235	CMCGA	TDC Cornermatic* Corner — Galvanized Stackable	250

\*Cornermatic is a trademark of Systemation, Inc. Ductmate is in no way affiliated with Systemation, Inc.

## SPIRALMATE® — ROUND DUCT CONNECTOR SYSTEM

### SMALL PROFILE 10" – 38"

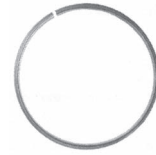
ITEM #	MODEL	DESCRIPTION	CTN/QTY
715610	14010	10" Spiralmate Galvanized Ring	1
715612	14012	12" Spiralmate Galvanized Ring	1
715614	14014	14" Spiralmate Galvanized Ring	1
715616	14016	16" Spiralmate Galvanized Ring	1
715618	14018	18" Spiralmate Galvanized Ring	1
715620	14020	20" Spiralmate Galvanized Ring	1
715622	14022	22" Spiralmate Galvanized Ring	1
715624	14024	24" Spiralmate Galvanized Ring	1
715626	14026	26" Spiralmate Galvanized Ring	1
715628	14028	28" Spiralmate Galvanized Ring	1
715630	14030	30" Spiralmate Galvanized Ring	1
715632	14032	32" Spiralmate Galvanized Ring	1
715634	14034	34" Spiralmate Galvanized Ring	1
715636	14036	36" Spiralmate Galvanized Ring	1
715638	14038	38" Spiralmate Galvanized Ring	1



Spiralmate Round Duct Connector System



Closure Ring



Flange

### LARGE PROFILE 30" – 72"

ITEM #	MODEL	DESCRIPTION	CTN/QTY
715640	15040	40" Spiralmate Galvanized Ring	1
715642	15042	42" Spiralmate Galvanized Ring	1
715644	15044	44" Spiralmate Galvanized Ring	1
715646	15046	46" Spiralmate Galvanized Ring	1
715648	15048	48" Spiralmate Galvanized Ring	1
715650	15050	50" Spiralmate Galvanized Ring	1
715652	15052	52" Spiralmate Galvanized Ring	1
715654	15054	54" Spiralmate Galvanized Ring	1
715656	15056	56" Spiralmate Galvanized Ring	1
715658	15058	58" Spiralmate Galvanized Ring	1
715660	15060	60" Spiralmate Galvanized Ring	1

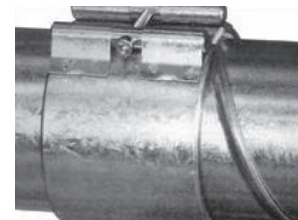
**NOTE:** Larger diameters available upon request.

## DUCT SYSTEM ACCESSORIES

### QUICK SLEEVE

The perfect, airtight connection for round or spiral duct 3" through 12".

Tighten one bolt to complete the connection. Duct can be disassembled and reassembled. No end preparation necessary. No protrusions in the airstream. Ideal for ducts carrying dust, etc.



### Quick Sleeve Round Duct Connector — with FDA Gasket

ITEM #	MODEL	DESCRIPTION
715853	QSFDA3GA	3" Quick-Sleeve – Galvanized
715854	QSFDA4GA	4" Quick-Sleeve – Galvanized
715855	QSFDA5GA	5" Quick-Sleeve – Galvanized
715856	QSFDA6GA	6" Quick-Sleeve – Galvanized
715857	QSFDA7GA	7" Quick-Sleeve – Galvanized
715858	QSFDA8GA	8" Quick-Sleeve – Galvanized
715859	QSFDA9GA	9" Quick-Sleeve – Galvanized
715860	QSFDA10GA	10" Quick-Sleeve – Galvanized
715862	QSFDA12GA	12" Quick-Sleeve – Galvanized
715864	QSFDA14GA	14" Quick-Sleeve – Galvanized



– E.&O.E. – Subject to Change Without Notice – May Not Be Available At All Locations –

## DUCT SYSTEM ACCESSORIES (cont'd)

### ACCESS DOORS — THE “SANDWICH” FOR ROUND AND RECTANGULAR DUCT

- Insulated or uninsulated
- Smooth interior finish on insulated doors
- Tested to 20" W.G. with no leakage noted
- Tested to negative 10" W.G. with no leakage noted

Please specify when ordering doors for negative pressure applications.  
Insulated doors are recommended for negative pressure applications.



#### Rectangular Duct — Insulated — Galvanized

ITEM #	MODEL	SIZE (")
715298	DI106GA	10 × 6
715300	DI128GA	12 × 8
715302	DI1814GA	18 × 14
715304	DI2418GA	24 × 18

**NOTE:** Also available without insulation.

#### Round Duct — Insulated — Galvanized

ITEM #	MODEL	SIZE (")	ROUND DUCT SIZE (")
715358	DRI846GA	4 × 8	5– 6
715360	DRI849GA	4 × 8	7– 9
715362	DRI8411GA	4 × 8	10– 11
715364	DRI8414GA	4 × 8	12– 14
715372	DRI12811GA	8 × 12	10– 11
715374	DRI12814GA	8 × 12	12– 14
715376	DRI12816GA	8 × 12	15– 16
715378	DRI12818GA	8 × 12	17– 18
715380	DRI12820GA	8 × 12	19– 20
715390	DRI161216GA	12 × 16	15– 16
715392	DRI161218GA	12 × 16	17– 18
715394	DRI161220GA	12 × 16	19– 20
715396	DRI161222GA	12 × 16	21– 22
715398	DRI161224GA	12 × 16	23– 24
715400	DRI161228GA	12 × 16	25– 28
715402	DRI161232GA	12 × 16	29– 32
715404	DRI161236GA	12 × 16	33– 36
715430	DRI241832GA	18 × 24	29– 32
715432	DRI241836GA	18 × 24	33– 36
715434	DRI241840GA	18 × 24	37– 40
715436	DRI241844GA	18 × 24	41– 44
715438	DRI241848GA	18 × 24	45– 48
715440	DRI241852GA	18 × 24	49– 52
715442	DRI241856GA	18 × 24	53– 56
715444	DRI241862GA	18 × 24	57– 62

**NOTE:** Also available without insulation.

### ULTIMATE ACCESS DOORS — BLACK IRON

ITEM #	MODEL	SIZE (")
715336	D128ULBI	12 × 8
715335	D1212ULBI	12 × 12
715334	D1010ULBI	10 × 10
715330	D1010ULWSBI (w/insulation)	10 × 10

Contact your ECCO representative for more information or pricing on Ductmate's full line of access doors.



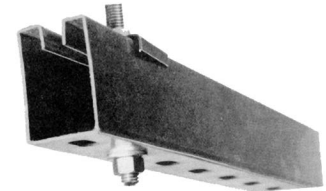
– E.&O.E. – Subject to Change Without Notice – May Not Be Available At All Locations –

## TRAPEZE DUCT HANGER, ISOLATION PADS, AND TRAPEZE BEAM CLAMPS

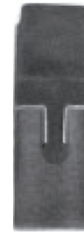
- Hot-dipped galvanized
- Eliminates hard to cut and punch angle iron
- Ship directly to job site
- Easy to cut
- Lightweight
- Neat, professional appearance

ITEM #	MODEL	DESCRIPTION
715252	TRAP05GA	Trapeze Duct Hanger @ 20' lengths – Galvanized
715258	DM2735AS	Isolation Pad for Trapeze Hanger (100/ctn)
715254	TBCLAMP	Trapeze Beam Clamp Assembly (100/ctn)

Note: For every 4 LF of Trapeze Hanger ordered the customer will receive 1 Trapeze Washer at no charge. This will be shown as a comment line on the order and will not be invoiced separately.



Trapeze Duct Hanger



Isolation Pad



Beam Clamp

## ISOLATION HANGER TYPE SI

Rubber prevents vibrations from being transmitted from air ducts and other ventilation devices to parts of the building.

The load-bearing capacity of the hanger can be used to its full extent.

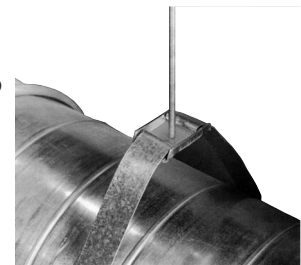
ITEM #	MODEL	DESCRIPTION	WT/LBS
715256	DM2723SI	Isolation Hanger for 3/8" Threaded Rod	0.74



## ROUND DUCT STRAP BRACKET TYPE BA

The ideal way to hang round duct work. No tools required. The steel strip is hand bent into the bracket which is self loading. A stamped galvanized steel bracket joins the two ends of the galvanized steel strip encircling the duct and provides a suspension point for a hanger rod.

ITEM #	MODEL	DESCRIPTION	WT/LBS
715804	DM4703BA3	Round Duct Strap Bracket (for 5/16" to 3/8" rod) – Galvanized	0.14



– E.&O.E. – Subject to Change Without Notice – May Not Be Available At All Locations –



## CLUTCHER SYSTEM

- Can be used on a variety of mechanical systems
- Wire and clutcher sold separately
- Eliminates the need to stock pre-cut wire
- Tapered bore design for fast and easy installation
- Easily adjust hanging height by hand
- Extremely strong
- Offers a 5-to-1 safety factor
- Available in variety of sizes for different weights
- Items can be hung at angles up to 60° from vertical
- Lightweight design reduces the risk of on-site accidents
- Aesthetically pleasing



ITEM #	MODEL	DESCRIPTION
715280	12750	#10 Clutch, 10/bag
715281	12751	#20 Clutch, 10/bag
715282	12752	#30 Clutch, 5/bag
715283	12753	#40 Clutch, 5/bag

## CLUTCHER TOOLS

ITEM #	MODEL	DESCRIPTION
715278	12730	Wire Rope Cutter (HF/WRC)

## WIRE ROPE

Ductmate Wire Rope is designed for the suspension of HVAC and other mechanical systems. This product has been designed to be used in conjunction with Ductmate's Cablemate Systems.

- Aircraft quality zinc coated wire rope
- Superior strength
- Supplied in coils to reduce waste
- Coils were designed for strength and ease of use
- Available in a variety of sizes and lengths



### #10 WIRE ROPE FOR #10 CLUTCHER

ITEM #	MODEL	DESCRIPTION
715286	12755	#10 Wire Rope, 500 ft/spool — 2.0 mm

### #20 WIRE ROPE FOR #20 EZ-LOCK AND CLUTCHER

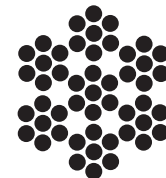
ITEM #	MODEL	DESCRIPTION
715287	12760	#20 Wire Rope, 500 ft/spool — 3.2 mm

### #30 WIRE ROPE FOR #30 CLUTCHER

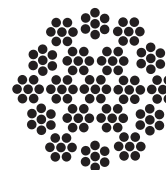
ITEM #	MODEL	DESCRIPTION
715288	12766	#30 Wire Rope, 1,000 ft/spool — 4.8 mm

### #40 WIRE ROPE FOR #40 CLUTCHER

ITEM #	MODEL	DESCRIPTION
715289	12770	#40 Wire Rope, 500 ft/spool — 6.0 mm



Wire Rope  
7x7



Wire Rope  
7x19

– E.&O.E. – Subject to Change Without Notice – May Not Be Available At All Locations –



## MOISTURE DRAINS AND CAPS

An economical and fast method of installing leakproof drain in ductwork and drain pans.

ITEM #	MODEL	DESCRIPTION
715904	MD75GA	Moisture Drain – 3/4"



## PROGUARD — PROTECTIVE DUCT COVERING

PROguard Heavy Duty is a dual-ply polyethylene film with a high-tack adhesive coating. It is specially-formulated to keep film attached and leave no residue when removed. Its unique manufacturing process gives ProGuard Heavy Duty unmatched puncture resistance, strength, elongation, and workability.

PROguard Standard Grade is an economical singly-ply film with a low-tack adhesive coating.

### Features:

- Color: Clear / Blue
- Adhesion: Adheres to Galvanized, Stainless Steel, Galvannealed, Aluminum, PVC Coated, Aluminized and Black Iron
- Type: Polyethylene
- Shelf Life: For best results use within 1 year of purchase
- Elongation: 600% – Heavy Duty Grade  
325% – Standard Grade
- Indoor/Outdoor: Stands up in the rain, snow, or sun
- UV Resistance: Good
- Adhesive: Acrylic. Does not leave sticky residue on duct work after removal



ITEM #	MODEL	DESCRIPTION	SIZE	CTN/QTY
715942	PG24	PROguard 24" roll – Heavy Duty	24" x 200'	2 rolls/box
715954	PG24B	PROguard 24" roll – Blue	24" x 200'	1 roll/box
715944	PG36	PROguard 36" roll – Heavy Duty	36" x 200'	1 roll/box
715946	PG48	PROguard 48" roll – Heavy Duty	48" x 200'	1 roll/box
715948	PG24C	PROguard – Clear	24" x 200'	2 rolls/box
715950	PG36C	PROguard – Clear	36" x 200'	1 roll/box

– E.&O.E. – Subject to Change Without Notice – May Not Be Available At All Locations –







[www.eccomfg.com](http://www.eccomfg.com)

**Langley Distribution**

19860 Fraser Highway  
Langley, British Columbia  
Canada V3A 4C9

Phone: 604-530-4151  
Toll Free: 1-877-955-4805  
Fax: 604-533-9335

**Calgary Distribution**

21 – 11150 38th Street, S.E.  
Calgary, Alberta  
Canada T2C 2Z6

Phone: 403-720-0895  
Toll Free: 1-877-955-4815  
Fax: 403-720-0897

**Kent Distribution**

20001 87th Ave. S, Bldg E  
Kent, Washington  
USA 98031

Phone: 253-872-3721  
Toll Free: 1-800-207-6859  
Fax: 253-872-3724